



Incident Alert

There is a high incidence rate of heavy equipment such as dump trucks, back hoes, front-end loaders, and water trucks interfering or colliding with power line poles, damaging them and creating an extreme hazard to anyone in the vicinity.

Hazard Summary – Working Near Power Lines:

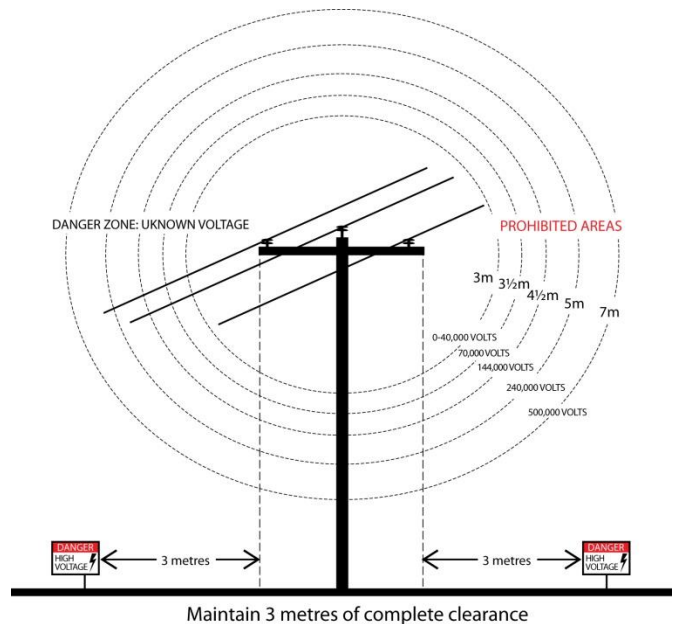
Working near energized power lines poses great danger and can result in death. Workers performing any work in the vicinity of power lines must receive proper training to minimize risks.

Defined Danger Zones (unknown voltage) and Prohibited Areas (identified voltages) require specific precautions.

Safe Work Practices:

1. No worker or equipment shall work within three metres of any overhead power without notifying Qulliq Energy Corporation.
2. No unqualified worker shall enter the Prohibited Zone.
3. Work in the vicinity of power lines requires a designated qualified observer/signaller to ensure workers and equipment maintain safe approach distances from power lines. The observer must be able to clearly communicate to workers by radio or air horn.
4. Heavy equipment machinery must not interfere with power line poles.

5. Before starting work or any other activity in the vicinity of power lines, contact the power company to establish safe approach distances and required safety precautions.
6. Do not place earth or other materials under or next to a power line if it reduces clearance to the power line.
7. Do not push snow or other materials at power line poles.
8. Do not excavate or perform other similar work near overhead power lines if it reduces the support for the power line.



The greater the voltage, the greater the distance one needs to maintain from the line. Unqualified workers must remain more than three metres from the power line.